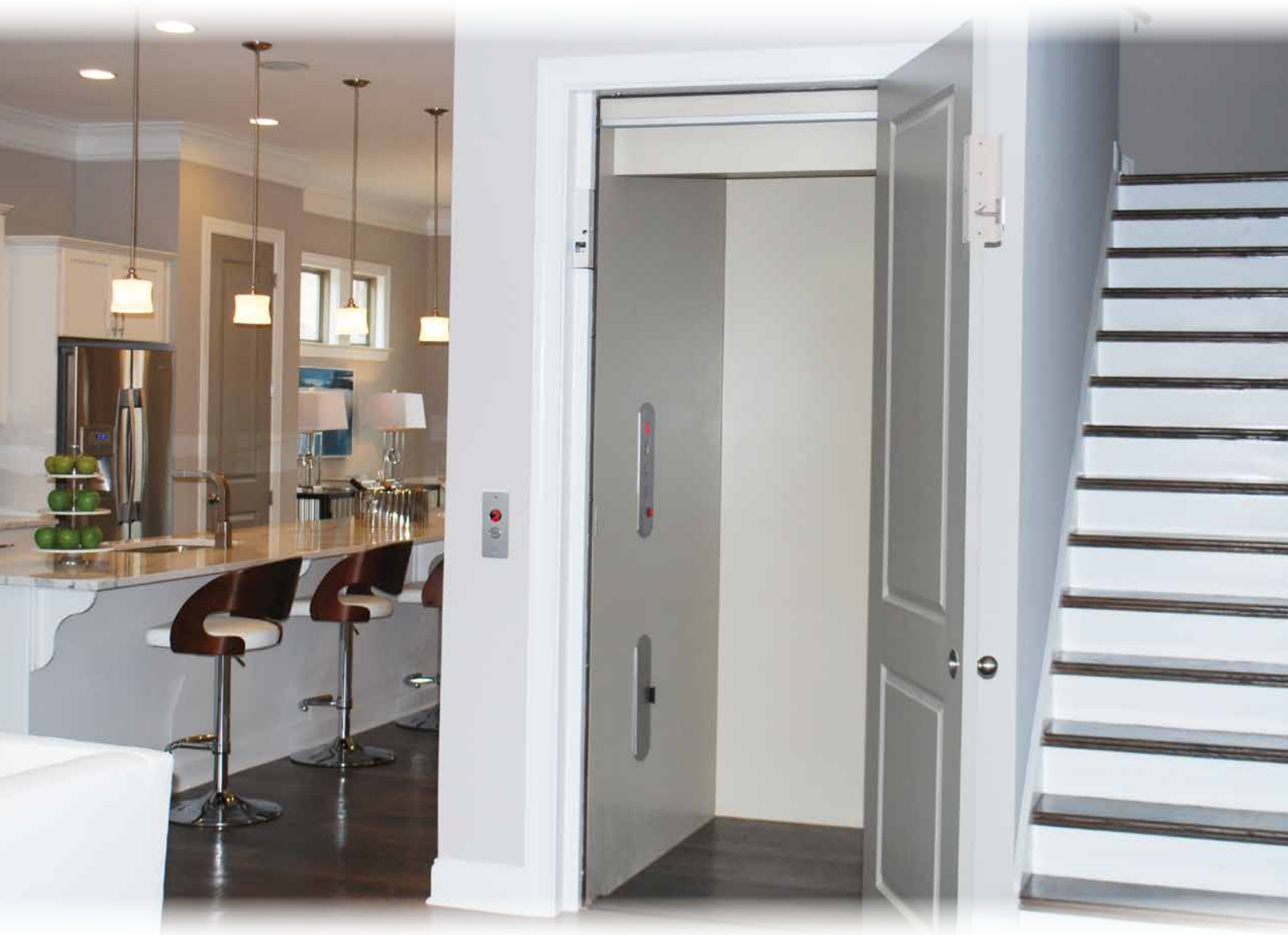


Cibães | symmetry




Symmetry Home Elevators
Life.
Elevated.®



The Symmetry Home Elevator Difference

Whether you are looking at new construction or retrofitting an existing home, you are looking for craftsmanship and long term quality. Symmetry home elevators can provide both.

Symmetry Home Elevators are:

- Proudly made in the U.S.A. 
- The most customizable elevator on the market
- Represented by the finest, professional distribution network, factory trained to ensure the highest quality service
- Available with an industry leading three-year limited parts warranty

Car Panel Styles

Panel Styles

Flat Panel



Shaker Panel



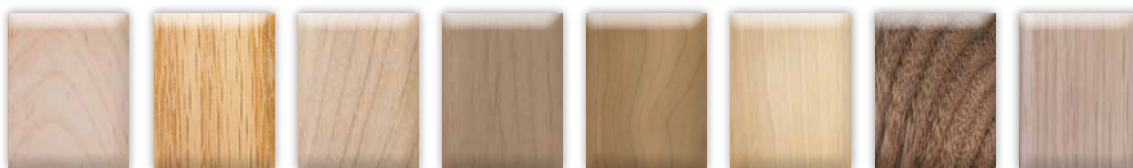
Recessed Panel



Raised Panel



Woods*



Birch

Red Oak

Maple

Alder

Cherry

Hickory

Walnut

White Oak

Stains

Shown on Red Oak



Clear Coat

Country
Pine

Golden Oak

Traditional
Cherry

To see more custom elevator options please reach out to your local Symmetry representative.

* Standard wood species are Birch and Red Oak

Colors illustrated may vary due to print or digital technology.

Elevator Car Styles

Flat Panel



The Flat panel car offers an unlimited opportunity to be customized and trimmed right in your home to complement your style.

Shaker Panel



Modeled after the simplistic design and rugged durability of the Shaker culture, the Shaker panels embellish the elevator with their clean lines and subtle nuance.

Elevator Car Styles

Recessed Panel



Providing flat central panels adorned by a raised border, the Recessed panel will add depth and elegance to any elevator.

Raised Panel



Manufactured by skilled craftsmen, the sweeping contours in the panels, accented by offset border trim, makes the all hardwood Raised panel car stand out.

Elevator Doors & Gates

Two and Three Speed Doors



The look and convenience of a commercial elevator, designed with custom finishes to match your home.

- Standard Finish: Beige
- Also available in Brushed Stainless Steel or powder-coated steel
- Framed Glass Panels: Available with clear safety glass for car and landing doors; standard finish for framed glass panels is Black

Elevator Doors & Gates



Symmetry Safety
3-Panel Car Door



The Symmetry Safety 3-Panel Car Door is one of the most reliable residential elevator car doors on the market.

- Standard Finish: Black
- Also available in Stainless Steel or powder-coated steel
- Clear vision panels available

Elevator Doors & Gates

Enterprise Collapsible Gate



The Enterprise Collapsible Gate is designed and manufactured to comply with current codes. Choose from a wide variety of attractive finishes and colors to ensure the perfect fit.

- Available in Brushed Stainless Steel or powder-coated steel
- Available Configurations: Classic, Pearl and Diamond and Pearl
- Strong, sturdy, functional construction

Elevator Doors & Gates

Accordion Door



The Accordion Door is offered as a standard feature on our residential elevators.

- Laminate Panels: Available in Light Oak, Birch or White
- Additional Panel Options:
 - Laminate panels in Dark Oak, Chalk, Antique White, Cherry, Walnut or Black
 - Unfinished or finished matching hardwood veneer
 - Clear or Bronze acrylic
 - Solid or Perforated aluminum
- Mechanical locking hinging

Fixture Options



Car Operating Panels (COP)



Phone Boxes



Specialty Fixtures



Hall Stations



Recessed LED Lights with Trim



Interlocks



Handrails

Metals*



Brushed
Stainless
Steel

Polished
Stainless
Steel

Brushed
Brass

Polished
Brass

Oil Rubbed
Brass

Blackened
Stainless
Steel

Black

Vintage
Bronze

To see more custom elevator options please reach out to your local Symmetry representative.

* Standard finish is Brushed Stainless Steel

Colors illustrated may vary due to print or digital technology

Landing Door Frames



Flush Door Frame with Symmetry Locking Device (SLD)
(Door by others)

Flush Mount Landing Door Frame



Flush Door Frame with EMDL and Latch Guard
(Door by others)

Symmetry's Flush Mount Landing Door Frames enhance safety.

- Standard Wood Species: Red Oak
- Also available in Birch, Maple, Alder, Cherry, Hickory, Walnut or White Oak
- Equipped with Symmetry Locking Device (SLD) or electro-mechanical interlock
- Available as a frame only

Inline Gear Drive



Hydraulic Drive



Winding Drum Drive



All of Symmetry's drive systems are industry leading and designed with quality engineering. The Inline Gear Drive does not require a machine room, taking up less space in your home. The Hydraulic Drive is one of the most popular choices for homeowners looking for the quietest ride. The Winding Drum Drive is time tested and technology approved. Please see your local dealer for drive specific details.

Standard Features

- Travel: Maximum of 50'0" (minimum 12 inches between stops)
- Speed: 40 fpm
- Rated Capacity: 1,000 lbs.
- Stops: Two
- Opening: Single
- Warranty: Three-year limited parts

Safety Features

- Motor controller supply disconnects
- In-car emergency stop switch and alarm
- Safety switch for car gates/doors
- Battery backup emergency car lights and alarm
- Electro-mechanical hoistway door interlocks
- Enhanced gate/bypass monitor
- Unauthorized hoistway entry detection